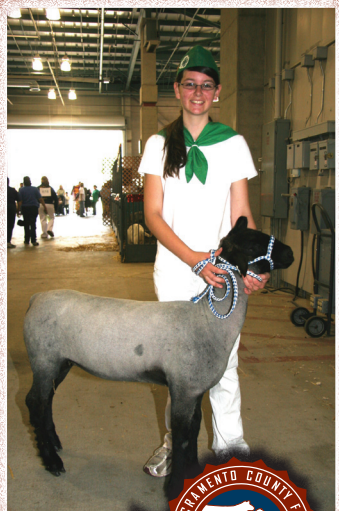


What Does Your Investment Yield?



Due to variation in animals and cut desired all figures are to be used as examples only! Weights based on 2009 averages and price per pound based on 2010 averages.

Steer ■ A 1350 pound steer will yield approximately 500-550 pounds of packaged meat.
 1350 pound live weight at \$2.16 per pound..... \$ 2916.00
 Processing Charge (slaughter, cutting, wrapping, freezing, etc.) estimated \$ 425.00
 Approximate total cost to you..... \$ 3341.00
 If you choose to resell the steer the approximate cost to you will be \$ 1863.00
 (\$2916.00 less approximate market value of \$1053.00)

Lamb ■ A 140 pound lamb will yield approximately 70 pounds of packaged meat.
 140 pound live weight at \$5.14 per pound..... \$ 719.60
 Processing Charge (slaughter, cutting, wrapping, freezing, etc.) estimated \$ 85.00
 Approximate total cost to you..... \$ 804.60
 If you choose to resell the lamb the approximate cost to you will be \$ 586.60
 (\$719.60 less approximate market value of \$133.00)

Hog ■ A 230 pound hog will yield approximately 140 pounds of packaged meat.
 230 pound live weight at \$3.10 per pound..... \$ 713.00
 Processing Charge (slaughter, cutting, wrapping, freezing, etc.) estimated \$ 200.00
 Approximate total cost to you..... \$ 913.00
 If you choose to resell the hog the approximate cost to you will be..... \$ 604.90
 (\$713.00 less approximate market value of \$108.10)

How to Participate

- Do your bidding in person or place an order using the Proxy form provided. The Livestock Committee will make all arrangements for you, from purchasing the animal, to delivery to your local locker for cutting, wrapping, and freezing.
- You can buy an animal at ringside for your desired price and resell it at market price to a wholesale marketing company. You pay only the difference and are announced as the buyer. The market price for each type of livestock will be announced before the sale.
- Add-on/contributions are to be a minimum of \$50 and must be paid for at the Auction Site at the time of purchase unless prior credit arrangements have been made or payment has been secured with a Visa or Master Card.
- ALL ANIMALS IN SALE ARE TERMINAL. No live sale animals!

For Further Information...

For further information please feel free to contact any of the below Auction Committee Members, or call (916) 263-2975.

Mike Albiani	Elk Grove	(916) 689-1545
Jay Carlson	Elk Grove	(916) 689-7602
Karen Hein	Franklin	(916) 684-2541
Laurie Kaspar	Wilton	(916) 715-8876
Alan Ladwig	Sheldon	(209) 745-7071
Jim Looper	Sheldon	(916) 801-4322
Brady Otto	Galt	(530) 521-9054
Matt Patton	Elk Grove	(916) 686-7741
Lauren Plumer	Wilton	(916) 687-7385
John Quinn	Elk Grove	(916) 682-3813
Amy Spithorst	Sacramento	(916) 681-8068
Mark Stretars	Elk Grove	(916) 682-8886
Charles Van Riper	Clarksburg	(916) 284-2107
Jim Vietheer	Wilton	(916) 687-7620

The Bottom Line

	Hog	Lamb	Steer
Feeder Animal Project.....	\$250	\$250	\$1000
Feed.....	\$180	\$90	\$650
Miscellaneous Cost	\$20	\$20	\$100
Total Project Cost.....	\$450	\$360	\$1750
Break Even price per pound	\$1.96	\$2.57	\$1.30
Based on 2009 average weight	230 lbs.	140 lbs.	1350 lbs.



All photos, 2007, Rochelle Pastor

The cost of a 4-H or FFA animal project is higher than the costs incurred by commercial stockmen because of the individual attention given to that animal and its development. This special attention deserves to receive a premium price above the market price. The "Break Even" cost will allow each young person a profit margin to reinvest back into next year, put away for college, etc.

They Need Your Support!



Local 4-H, FFA and Independent youth livestock competitors need you! The Junior Livestock Auction is the culmination of many months of an educational work experience that teaches biology, nutrition, accounting, marketing, and personal accountability. Please consider supporting this program with a purchase at the auction.

There are many uses for your top quality purchase...

For Individuals

Put the quality wrapped meat in your freezer to enjoy year-around. If a whole animal is too much, split it with friends.

Resell The Animal Back

Receive a possible tax benefit! Check with a Tax Consultant regarding deductions for price paid above market value.

For Businesses

Present packaged meat to your customers, host a barbecue for employees, or auction off for an employees' fund.

For Service Clubs

Host a barbecue; donate the meat, or auction off the packaged meat to members and boost the club's treasury.



Sacramento County Fair
Junior Livestock Auction
P.O. Box 15028
Sacramento, CA 95851
(916) 263-2975

Sacramento County Fair Jr. Livestock Auction



Sacramento County Fair Junior Livestock Auction

Sunday, May 29, 2011 at 10 am

Sunday, May 29, 2011
at 10 am

Official Sponsors of the Junior Livestock Show



FIVE STAR BANK

*Additional support
provided by*



Fair Open Memorial Day Weekend!
Thursday, May 26th - Monday, May 30th